

CERTIFICATE OF LOCATION OF GOVERNMENT CORNER

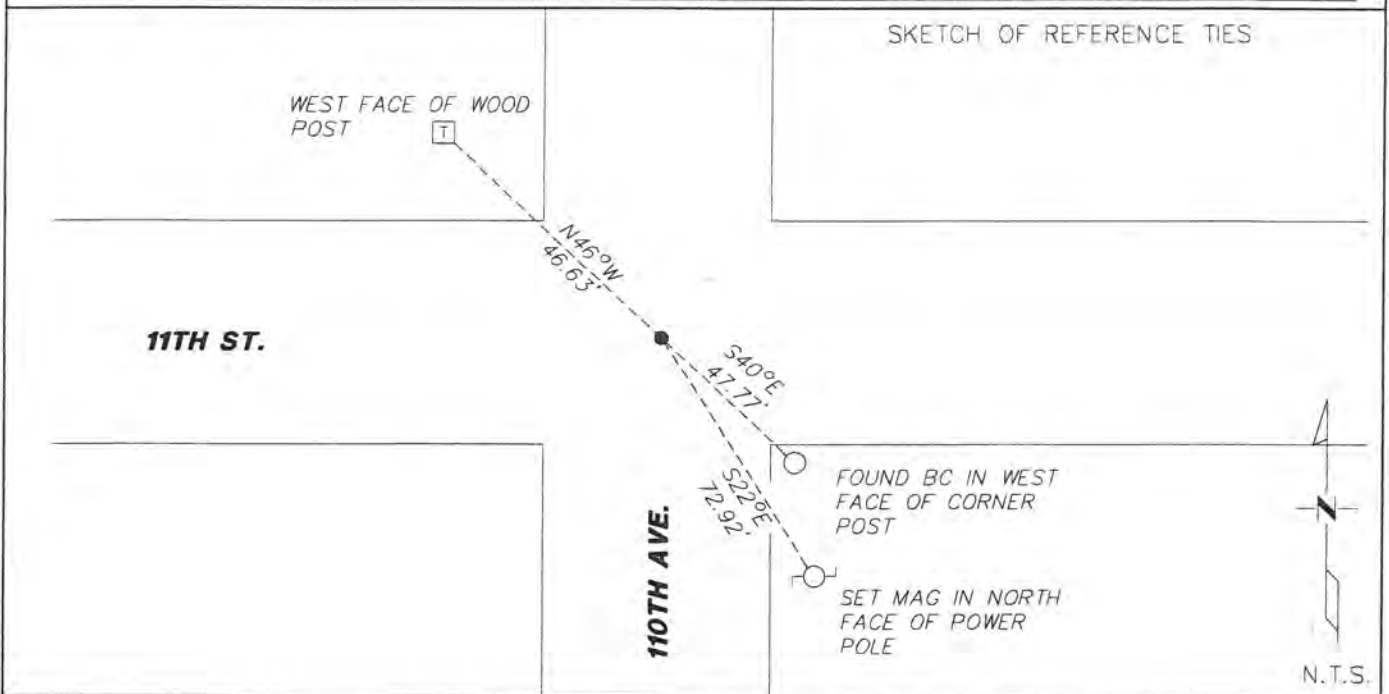
NORTHEAST Corner of Section 35, Township 105N, Range 42W
 5th Principal Meridian, State of Minnesota, County of Murray.

At the corner location shown on the sketch:

On 05/16/19 found a rebar with cap stamped Bueltel LS 43844
DATE

left monument as found lowered monument removed monument (explain)

On _____ placed a _____
DATE



Statement of evidence for this corner location is on back of this page.

I hereby certify that this document was researched and prepared by me or under my direct supervision and that I am a licensed Land Surveyor under the laws of the State of Minnesota.

Signature *K. Val...*

Date 6/27/19 License No. 49563

Title:

- Land Surveyor Professional Engineer
 County Surveyor County Engineer

OFFICE OF THE COUNTY RECORDER

County of Murray

I hereby certify that this document was filed in the Co.

Recorder's office at 9:00 A.M. on the 8th day of JULY A.D. 2019

County Recorder *Evelyn Larson*

by _____, Deputy

DOCUMENT NO. —

Statement of Evidence:

Northeast corner of Section 35, Township 105 North, Range 42 West, 5th Principal Meridian, Murray County, Minnesota.

- 1861 D.W. Wellman and S.S. Smoot did the original subdivision of the township.
- 1901 Murray County section notes show they located a stone in grade. Measured 2622.5' to the EQ corner of Sec. 35.
- 1930 J.W. Woolstienkraft, County Surveyor, found the stone at the corner and set ties as follows:
Fence corner 47.0' SE
Fence corner 47.6' SW
Fence corner 42.0' NW
- 2018 Bueltel-Moseng Land Surveying, LS 43844, dug with a backhoe and found an 8"x8"x10" stone. Set a 5/8" iron with seal #43844 over stone. Set 2 ties and established coordinates. (Measured 2647.54' to the NQ of Sec. 35)
- 2019 Westwood Professional Services searched area and found a capped rebar stamped "BUELTEL LS 43844", down 0.9'. Monument lies on centerline of a N,S,E,W intersection. Found 2/2 ties from 2018 corner record. Fits distance to the NQ of Sec. 35 from 2018 survey.

Analysis of the recovered data, field evidence and survey measurements, indicates that the monument found is the correct perpetuation of this corner. For additional information concerning this corner please contact Westwood Professional Services.